

Welcome to Parents & Students of Junior High Students



**OHPAHO
SECONDARY
SCHOOL**

Grade 8 Sample Timetable

	Semester 1	Semester 2
Block 1A	PE/Health	PE/Health
Block 1B	Numeracy/Literacy	Numeracy/Literacy
Block 2	Core	Core
Lunch		
Block 3	Core	Core
Block 4	Q1 -Option/Option Q2 -Option/Option	Q3 -Option/Option Q4 -Option/Option

Possible Options:

Musical Theatre



Construction



Core Improvement



Band



Cosmetology



Athletic Injury Management



Drama



Outdoor Education



Leadership



Sports



Photography and Film



Art and Design



ESports



Strategy Games



First Aid



Supply List

Wired headphones or earbuds for Chromebooks	Metric ruler
Package of grid paper	Pair of scissors
HB pencils-sharpened or mechanical	Highlighters (multiple colours)
pencil crayons and/or coloured markers	Scientific calculator (Texas Instruments)
Pencil sharpener with container	Geometry Set
Lined Loose-leaf paper(500 sheets)	2-4 Three Ringed Binders
Blue Or Black And Red Pens	Package of dividers
Pencil case	Set of clothing for PE
White erasers	Pair of non-scuff indoor running shoes
A large glue stick	

Athletics/Intramurals



Track and Field



Badminton



Crosscountry



Golf



Volleyball



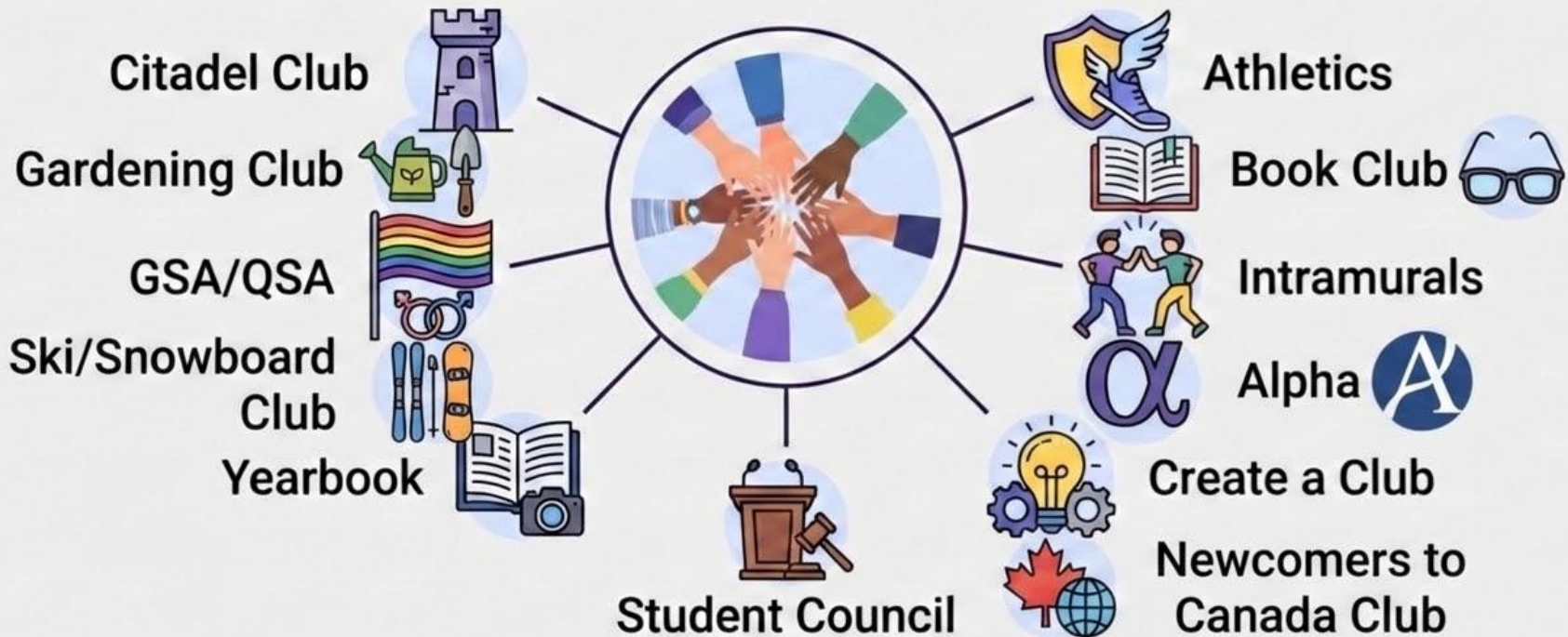
Soccer



Basketball

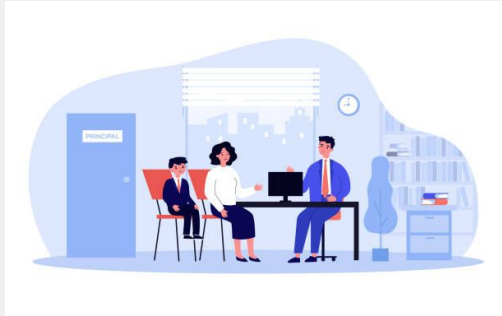


What other things can I get involved in at Ohpaho Secondary School?



Support for Junior High Students

- Admin: Mr. Hancock , Mrs. Maltais, Mr. Dykstra
- Counsellors: Mrs. Drover and Mr. Hayes
- Learning Support Teacher: Mrs. Thiessen
- FSL - Alexa Lonsdale



Role of the Alpha Team



ACADEMIC & CAREER PLANNING

School counsellors & administrators support students with programming, academic and career/post-secondary planning.



COUNSELLING SUPPORT

Assist with crisis/personal counselling.



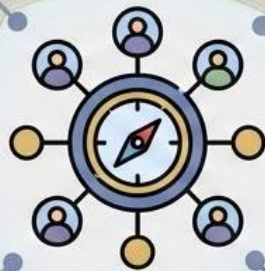
FIRST POINT OF CONTACT

The Alpha level team is the first contact for students missing classes, struggling with workload, or in apparent distress.



COLLABORATIVE PARTNERSHIPS

We work in collaboration with teachers, parents, and community partners.



So what does that really look like?

This could include helping students with:

- CTF selections
- Planning high school courses
- Monitoring attendance and behaviours in school
- Coordinating meetings with teachers and students to support academic success
- Exploring entrance requirements for post secondary programs
- Developing skills such as: time management, organization, or study habits
- Developing coping strategies for various stressors (school, friends, family, etc.)
- Support during times of crisis
- Referrals to community resources

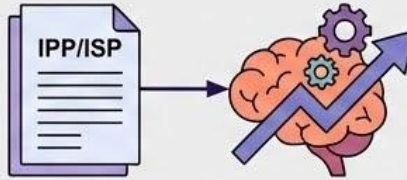
Learning Supports for Students

Types of Supports



Some students have received supports throughout their schooling such as extra time, quiet space, audio versions of tests, and scribes for written assignment and tests.

IPP/ISP & Maximizing Potential



If a student has had any of these supports, or if they have had an IPP/ISP, we want to ensure these supports are put into place to maximize the student's learning potential.

Transition from Feeder Schools



For students coming from our feeder schools who require learning supports, transition meetings will be set up by the feeder school Counsellor or Learning Support Teacher.

Learning Supports for Students

If you have any questions, or would like to set up a meeting,
please contact:

Kerry Thiessen

Learning Support Teacher



kerry.thiessen@gshare.blackgold.ca



587-671-0331 Ext. 306

Family School Liaison (FSL)



Skill-Based Interventions

Implement skill-based and strength-based interventions for students at a universal, small group, and/or one to one level.



Building Resiliency

Support students with building resiliency by helping develop social skills and problem solving skills.



Facilitating Partnerships

Help facilitate partnerships between home, school, and community agencies.

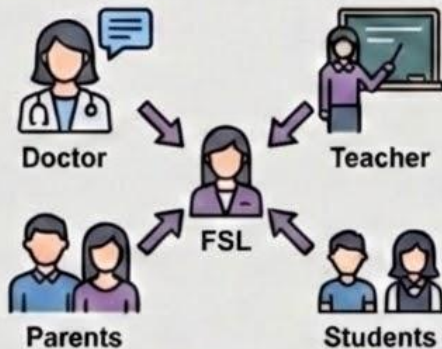


Providing Resources

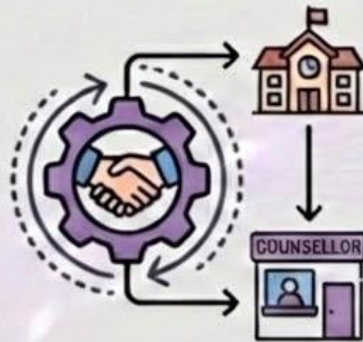
Provide resources for families and school staff.

Accessing services with the FSL

Referrals from



Coordination



Referrals are coordinated through the school counsellor

Parental Consent



Parental Consent is required for students under the age of 16

Upcoming Dates:

- Mid to late August - choose your options - coming to your email
- August 26 - 5-7 PM, Junior high students can pick up their schedules and drop off supplies in their assigned lockers.
- August 27 - School starts
- August 28 - School photos for junior high students
- September 17 - Meet the Teacher Night

To Do:

Option Form



Watch for the Option google form that will be coming to your email in mid to Late August

Tour



Enjoy the tour this evening - ask questions of staff and our student volunteers

Webpage



Follow our webpage at oss.blackgold.ca